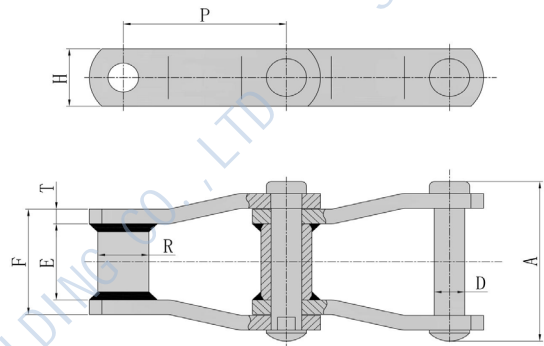


1.1.1 WELDED CHAIN

NARROW SERIES WR, WH, WHX, WRC, WHC

- WR chains have only thru-hardened rivets.
- WH chains have all parts thru-hardened.
- WHX chains have thru-hardened parts and induction hardened rivets as standard.
- Riveted construction is standard. Pin and cottered construction can be furnished on a made-to-order basis.
- WRC chain have straight sidebar and thru-hardened rivets.
- WHC chain have straight sidebar and all parts thru-hardened.

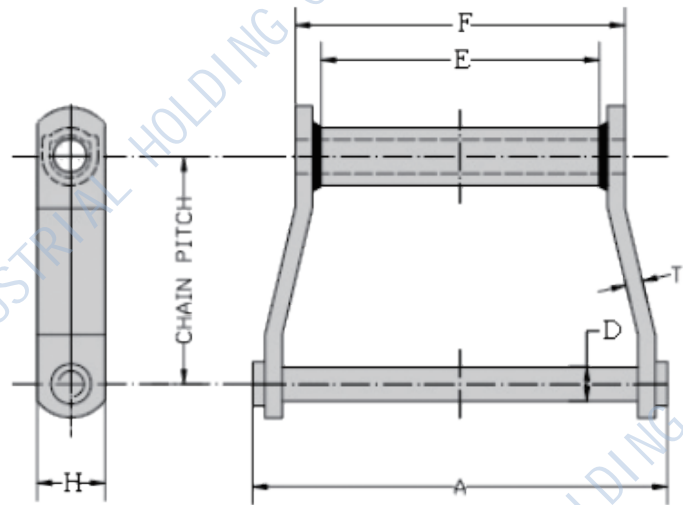


Chain No.	Average Pitch	E(mm)	Sidebar		Pin		Barrel	F(mm)	Min.Ult. Strength(KN)	Avg. Weight Chain kg/FT
			T(mm)	H(mm)	D (mm)	A(mm)	R (mm)			
WR78	66.27	25.40	6.40	31.75	12.70	75.00	21.34	51.00	120.00	2.00
WH78	66.27	25.40	6.40	31.75	12.70	75.00	21.34	51.00	146.80	2.00
WR78XHD	66.95	25.40	9.50	31.75	14.29	82.00	25.40	50.80	146.00	2.80
WH78XHD	66.95	25.40	9.50	31.75	14.29	82.00	25.40	50.80	163.50	2.80
WR82	78.10	28.58	6.40	31.75	14.29	82.30	25.40	57.15	133.50	2.20
WH82	78.10	28.58	6.40	31.75	14.29	82.30	25.40	57.15	160.00	2.20
WR82XHD	78.10	28.60	9.70	38.10	19.05	96.50	31.75	60.90	224.30	3.90
WH82XHD	78.10	28.60	9.70	38.10	19.05	96.50	31.75	60.90	254.00	3.90
WR124	101.60	38.10	9.70	38.10	19.05	107.00	31.75	71.40	240.00	3.60
WH124	101.60	38.10	9.70	38.10	19.05	107.00	31.75	71.40	250.00	3.60
WR124XHD	103.20	38.10	12.70	50.80	25.40	119.50	44.45	76.20	378.00	6.40
WH124XHD	103.20	38.10	12.70	50.80	25.40	119.50	44.45	76.20	542.00	6.40
WR106	152.40	38.10	9.70	38.10	19.05	107.00	31.75	69.85	240.00	3.00
WH106	152.40	38.10	9.70	38.10	19.05	107.00	31.75	69.85	250.00	3.00
WR106XHD	153.67	38.10	12.70	50.80	25.40	120.20	44.45	76.20	530.00	5.60
WH106XHD	153.67	38.10	12.70	50.80	25.40	120.20	44.45	76.20	542.00	5.60
WR132	153.67	76.20	12.70	50.80	25.40	156.00	44.45	112.30	520.00	6.50
WH132	153.67	76.20	12.70	50.80	25.40	156.00	44.45	112.30	542.00	6.50
WR132XHD	153.67	76.20	15.88	50.80	25.40	168.86	44.45	118.60	540.00	6.90
WH132XHD	153.67	76.20	15.88	50.80	25.40	168.86	44.45	118.60	543.00	6.90
WH150	153.67	76.20	12.70	63.50	25.40	156.00	44.50	112.30	620.00	7.40
WR157	153.67	76.20	15.90	63.50	29.10	171.00	44.50	117.50	796.00	9.20
WH157	153.67	76.20	15.90	63.50	29.10	171.00	44.50	117.50	820.00	9.20

1.1.1 WELDED CHAIN

WDH SERIES

- WDH Series have all parts thru-hardened.
- Riveted construction is standard. Pin and cottered construction can be furnished on a made-to-order basis.

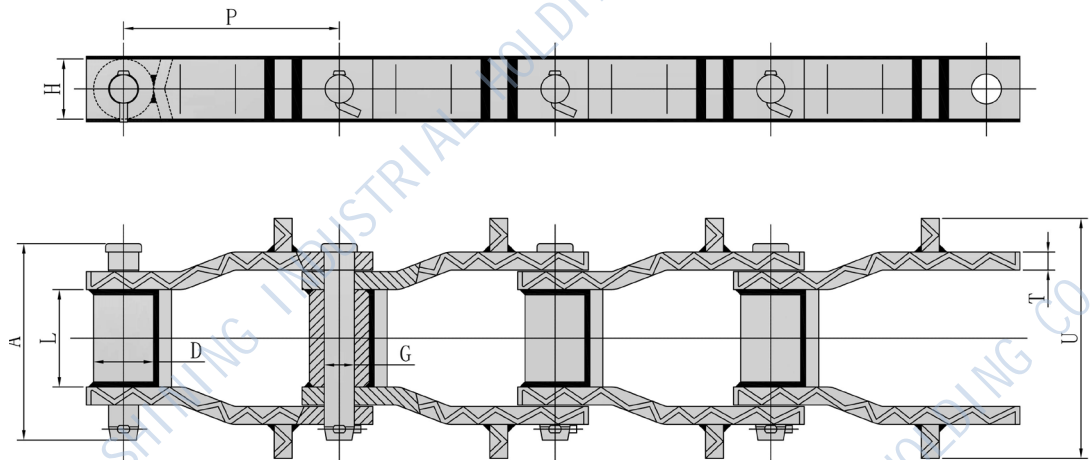


Chain No.	Average Pitch	E(mm)	Sidebar		Pin		Barrel R (mm)	F(mm)	Min.Ult. Strength(KN)	Avg. Weight Chain kg/FT
			T(mm)	H(mm)	D (mm)	A(mm)				
WDH102	127.0	162.00	9.70	38.10	19.05	232.50	197.00	226.7	146.80	2.00
WDH104	152.4	104.78	9.70	38.10	19.05	173.30	136.53	226.7	146.00	2.80
WDH110	152.4	228.60	9.70	38.10	19.05	296.00	260.50	235.0	163.50	2.80
WDH113	152.4	228.60	12.70	38.10	22.23	311.50	270.20	297.8	133.50	2.20
WDH120	152.4	222.25	12.70	50.80	22.23	301.60	260.35	311.5	160.00	2.20
WDH112	203.2	228.60	9.70	38.10	19.05	296.00	260.50	250.0	224.30	3.90
WDH116	203.2	330.20	9.53	44.45	19.05	395.00	358.78	250.0	254.00	3.90
WDH480	203.2	279.40	12.70	50.80	22.23	366.90	323.85	311.5	240.00	3.60
WDH480XHD	203.2	279.40	15.88	50.80	25.40	380.85	330.20	543.0	250.00	3.60

1.1.1 WELDED CHAIN

WHX SERIES

• WHX Series have press fit construction and induction hardened pins. All of our heavy duty drag chains are heat treated for maximum wear life. The welding process includes pre-heat and post-heat cycles before and after. WHX drag chains include hard face welding on all sliding surfaces for wear resistance. applications.



Chain No.	Pitch	Overall Width Of Chain	Inside Width	Pin Dia.	Barrel	Sidebar		Common Flight Widths	Rated Working Load	Ultimate Strength
		A	L	G	D	H	T	U	LBS.	LBS.
WHX5157	6.05	6.875	3.000	1.125	1.75	2.50	0.625	8-21	18,200	180,000
WHX6067	9.00	8.018	3.625	1.250	2.50	2.50	0.750	10-24	24,300	230,000
WHX6267	9.00	8.062	3.630	1.375	2.50	2.50	0.750	10-20	26,700	210,000
WHX5121	9.00	9.873	3.630	1.250	2.50	2.50	1.125	10-30	27,600	275,000
WHX5221	9.00	9.813	3.630	1.375	2.50	2.50	1.125	10-30	30,300	305,000
WHX6121	9.00	9.875	3.630	1.250	2.50	2.50	1.125	10-30	27,600	275,000
WHX6221	9.00	9.813	3.630	1.375	2.50	2.50	1.125	10-30	30,300	305,000

1.1.1 WELDED CHAIN

Weld Integrity

Shining understands that the welding integrity is critical to the operation success. proper welding produces welds that are free of cracks, slag, inclusions, under cutting and overlap. We offer pre-and post-heat treatment on all sidebars prior to welding. Our welds are tested to ensure proper weld penetration to provide maximum durability.



Engineering Class Chains and Sprockets

Engineering Class Chains and Sprockets must work together, so buying them from the same source makes sense. When chains and sprockets articulate correctly, you get longer service life from your chain. That means long-term savings and real value for your operation. Maximize your operation with Engineering Class chains and sprockets from Shining are available as:

- B or C hubs: traction wheels
- Split construction
- Lightening holes

